

Bella Color

by PERMIN



75 % kid mohair, 20 % uld/ull
& 5% polyamid
50g = ca. 145 m



14 m x 22 p/v
på p./st. 6
= 10 x 10 cm



883150



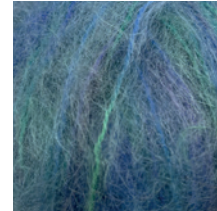
883151



883152



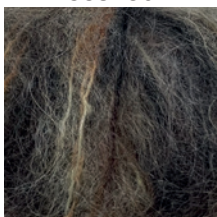
883153



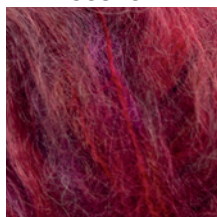
883154



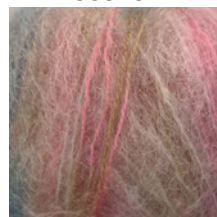
883156



883157



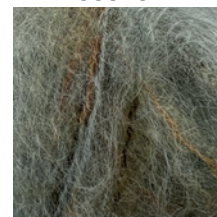
883159



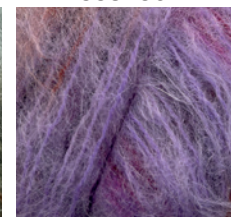
883160



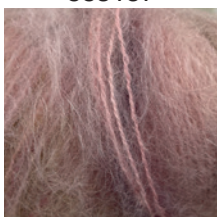
883163



883164



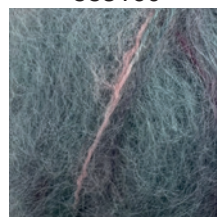
883165



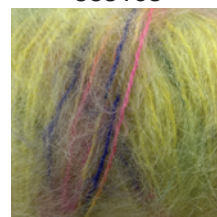
883166



883167



883168



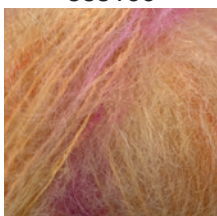
883169



883170



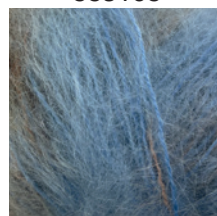
883171



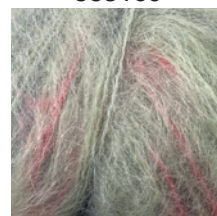
883172



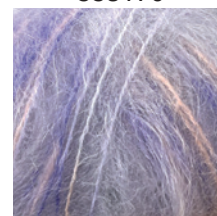
883173



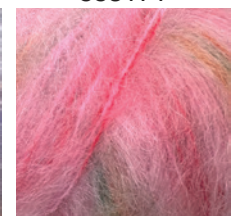
883174



883175



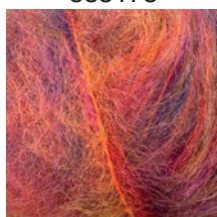
883176



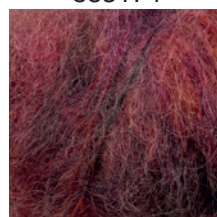
883177



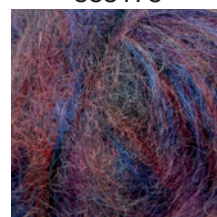
883178



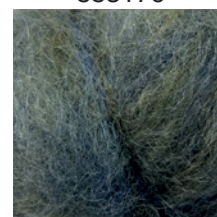
883179



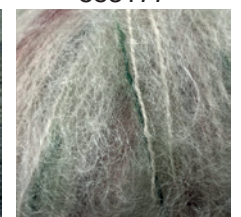
883180



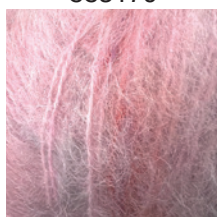
883181



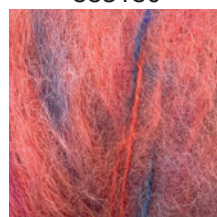
883182



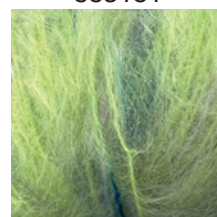
883183



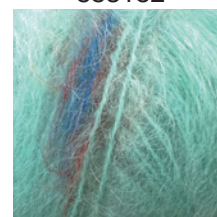
883184



883185



883186



883187

CARL J PERMIN A/S
Tel: +45 36721200 • permin@permin.dk

CARL PERMIN AB
Tel: 033 127710 • sverige@permin.dk

CARL PERMIN A/S
Tel: 23163530 • norge@permin.dk

CARL J PERMIN A/S Deutschland
Tel: 0461 4902054 • permin@permin.dk

by PERMIN